

**S**Quape® **X**<sub>[dream]</sub>

Gebrauchsanweisung  
User manual

English

## Table of contents

1. Description of the SQuape X[dream]	10
2. Scope of usage	11
3. Carton contents	11
4. Specifications	11
5. Initial setup	13
6. Accessories	14
7. Warnings	15

## 1. Description of the SQuape X[dream]

The SQuape X[dream] is a rebuildable tank atomizer which was developed and produced in its entirety in Switzerland. It is made by StattQualm GmbH to be used for the vaporisation of e-liquid. The SQuape X[dream] can be closed off completely by a slight rotation of the tank and is therefore absolutely leak-free. Because of the closed system the tank can be taken off the atomizer and transported empty or full.

Short circuits are virtually impossible, through clever design of current conduction, as well as due to the nonconductive surface of the whole atomizer-chamber (consisting of ematalised aluminum).

We recommend a short rinse of the SQuape X[dream] in water before first use (but make sure to thoroughly dry all the parts afterwards).

Before first use, a coil (from vape-compatible wire material) must be made and a wick (from according wicking material) must be installed. After that, fill the atomiser with e-liquid according to the user manual.

Should you be inexperienced with the use of rebuildable atomisers (coiling and/or wicking) you are advised to contact a specialist retailer.

You can find further information, as well as detailed video materials on our website:

**<http://www.squape.ch>**

## 2. Scope of usage

We recommend using the SQuape X[dream] with resistances between 0.7 and 2.0Ω. Please be advised that too much power can lead to the atomizer body heating up. Be aware that usage of the SQuape X[dream] and the self made coils is at your own risk.

## 3. Carton contents

1x SQuape X[dream] (partially assembled)  
1x hex-wrench  
1x SQuip Tip X  
1x Spare glass  
Various spare screws and o-rings  
1x User manual

## 4. Specifications

### 4.1. Data

- Diameter: 22 mm
- Height (without SQuip Tip and 510 connector): 54,4mm
- Weight (without SQuip Tip): - 80g
- Threads: 510
- Tank volume: - 4.0 ml

### 4.2 Materials

Here at StattQualm we feel strongly about what materials we use and therefore only the best materials make it into our atomizers.

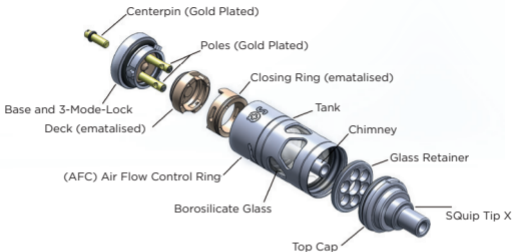
The following table shows what materials are used in the SQuape X[dream]. Should you have known allergies to one of the listed materials we strongly suggest you do not use this atomiser.

Stainless steel components: Steelnumber 1.4404 / 316L; Glass: Borosilicate glass; Deck and closing ring: Aluminium, ematalised; Centerpin and poles: Eco brass, gold-plated; O-rings: nbr 70 shore

### 4.3 Features

- Top Filling
- Stepless Airflow Control (replaceable)
- Single- or dual coil usage
- Adjustable 510 connector (gold plated)
- Replaceable borosilicate glass
- Deck is accessible even with full tank
- Nonconductive components inside the evaporation-chamber (deck and closing ring) - no danger of short circuits
- No limits to thicker wires through pins with wire holes (2.2mm) and wire fixation through grub screws
- Gold plated contacts
- Suitable for Temp. Control and V/W mode
- The tank can be completely closed and removed (even when full)
- Easy switching of the three positions „vape“, „remove“ and „closed“ with the 3-mode-lock

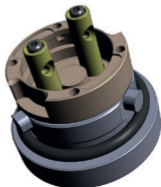
#### 4.4 Denomination of the single components



The borosilicate glass, the chimney (including the bell), the airflow control ring, all of the o-rings, the glass retainer as well as the closing ring can all be removed from the tank section.

#### Coiling deck and base

Please be advised that the base of the SQuape X[dream] cannot be taken apart, except for the centerpin, the grub screws, the deck and the two o-rings.



## 5. Initial setup

### 5.1 Cleaning

The SQuape X[dream] has been thoroughly cleaned before dispatch.

We still advise that you rinse all parts with tepid water before first use and regularly afterwards. Please make sure all parts are well dried before use.

**CAUTION:** Do not use the SQuape X[dream] as long as parts are still wet or humid. Water can lead to short circuits and/or other malfunctions.

### 5.2 Switch between the positions „vape“, „remove“ and „closed“

Grip the tank section (fig. 1) with one hand and the base (fig. 2) with the other. When first unpacked, the SQuape X[dream] is in „remove“-mode. A slight clockwise twist brings the tank into „vape“-mode. A slight counterclockwise twist from the „remove“-mode brings the tank into „closed“-mode. In this mode (as in the „remove“-mode) the tank is completely closed and no liquid can exit the tank. Additionally, in this mode the tank stays fixed to the base.

Both „closed“ and „vape“-modes click audibly when switched to.

We advise you to lubricate the o-rings before first use with VG or VG-containing e-liquid, as mentioned in the separate installation-manual.

Should you encounter difficulties when removing the base from the tank section please screw on the atomizer to an atomizer-stand or a mod. As soon as the atomizer is securely screwed on you can continue twisting the tank-section clockwise and the tank will change position in the 3-mode-lock.

Be aware that the SQuape X[dream] does not have threads to connect the base to the tank. The connection is solely made through the 3-mode-lock, which only needs slight twisting to operate.



fig. 1



fig. 2

### 5.3 Filling the SQuape X[dream]

Before filling the Tank, please make sure it is in „closed“ or „remove“-mode. Unscrew the top-cap counterclockwise (fig. 1), then fill the tank through the filling holes around the edge (fig. 2). Screw the top-cap back on. To open the juice-flow, twist the tank clockwise into „vape“-mode.



fig. 1

fig. 2

### 5.4 Exchanging the glass tank

Unscrew the top-cap and empty the tank completely. Rinse the tank with tepid, running water. Take a tool with two pointy ends (tweezers or needle-nosed pliers) into two opposing filling holes and unscrew carefully counterclockwise. As soon as the glass retainer is removed, you can pull out the glass. Please be careful when inserting a new glass: check if the o-rings are undamaged and correctly seated. After inserting the glass and the o-rings screw the glass re-

tainer back on so as to trap the glass firmly between the two o-rings.

Caution: Do not apply too much force when screwing on the glass retainer as the glass might break under too much pressure.

### 5.5 Examples of possible coils

You'll find examples of different coils on our website [www.squape.ch](http://www.squape.ch), as well as links to tutorials on YouTube or other sources.

### 5.6 Setting of the airflow control

The airflow control can be used for either single or dual coils. When using a single coil, twist the airflow control ring to the position where your coil sits in the deck. See that only one slit is opened (opposing the single coil slit sits the SQ-logo).

When using dual coils, twist the ring so both slits on opposing sides are open and align to the coils on the deck.

You can now adjust the airflow by twisting the ring slightly.

When finely adjusting the airflow, there is a crease that might help you when seeking a restricted draw.

## 6. Accessories

Various accessories and spare parts are available and we are constantly increasing the range of parts. Please only use genuine parts from StattQualm.

## 7. Warnings

- Please read the user manual carefully before first use.
- Keep the SQuape X[dream] dry (from water)!
- The base can not be disassembled, except for the centerpin, the grub screws for fixing the wire, the deck and the o-rings.
- Only use this device for vaporisation of e-liquid from trusted sources.
- Please only air-dry the SQuape X[dream].
- Only connect the atomiser to an electricity source made for atomisers!
- The atomiser can be damaged by use of very high voltages or usage without e-liquid. StattQualm cannot be made liable in case of inappropriate or incorrect use.
- Never use the SQuape X[dream] as door-stopper!
- Not suitable for children. Keep the device away from children! Additionally, this device is not suitable for use during pregnancy.
- Do not use oils or liquids containing oils in this atomiser!
- For rebuilding (coiling and wicking) only use materials and tools that are made for this purpose (wire, wick, mesh etc.).
- The SQuape X[dream] and accessories thereof are only distributed by authorised partners of StattQualm. Atomisers and accessories, which have been bought elsewhere, are exempt from warranty.
- Only use genuine accessories by StattQualm. Accessories made by other manufacturers are exempt from warranty by StattQualm GmbH.
- Please visit <http://shop.squape.ch/en/general-terms-and-conditions> for information about warranty and the general terms and conditions.

Further information can be found at [www.squape.ch](http://www.squape.ch)





A brand by StattQualm GmbH  
Made in Switzerland  
[www.stattqualm.ch](http://www.stattqualm.ch)